

NEWSLETTER

BE KIND | BE SAFE | BE YOUR BEST SELF



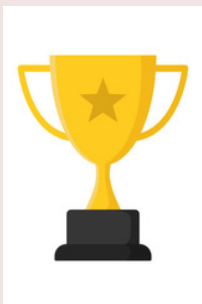
26.1.2024

A MESSAGE FROM MS. RICHARDS

Welcome to our newly designed newsletter, we hope that you enjoy catching up on our latest news and also finding out what amazing learning has been happening in school.

It has been a busy start and our children have been getting fully immersed in their latest enquiry questions...there has been a real buzz around school. Our focus is on Geography - from Rio to the Rainforest. It has been great hearing all the new facts that they have already acquired the children never stop surprising me with their enthusiasm and knowledge. I'm sure you are all becoming Geography specialists at home too! 😊

ATTENDANCE



Good attendance is essential in securing the best learning outcomes for all pupils - "Every day counts." Our attendance target is 96% or more. If you need any help or support in securing good attendance for your child, please contact us.

This week's attendance winners are Elm class with 99% attendance!



THIS WEEK'S HIGHLIGHTS



EYFS UPDATE

Nursery

Look up, Look down. What is all around?
This term Nursery are looking at our environment. They are looking at Nottingham and the special places within it. They have talked about where we all live and the differences in various buildings throughout Gedling and Nottingham.

Reception

In Reception, the children have started exploring the question, where do our travels take us? They began by learning about our local area Gedling, and then our city Nottingham. They are currently learning about the UK. They are enjoying exploring maps and can't wait to learn about London, through Paddington's guide to London.



YR 3 UPDATE

The children in Year 3 experienced what it would be like to be in an earthquake. They felt rubble hitting them, water from a burst water pipe soaking them and the sound of the 'earthquake alert' siren blasting. They returned to the scene of the disaster with aid that we thought the survivors would need however rubble blocked our path so we had to leave the aid and hope that the survivors could get to it.



YR 1/2 UPDATE

Year 1/2 started with a trip to Rio to enjoy some carnival dancing and try the delicious foods from Brazil. They are learning about what it is like in Rio and comparing it to life in Nottingham to think about how people choose where to live!



YR 4 UPDATE

In Year 4, the enquiry question this term is 'Why does water matter?'.
The children began investigating this by listening to soundscapes of water – rainstorms, waterfalls and oceans – and sharing their own experiences of, and ideas about, water.

They also investigated the meaning of 'matter' and had fun outside being 'particles', to investigate the three states of matter. Can you spot the solids, liquids and gases?



YR 5 UPDATE

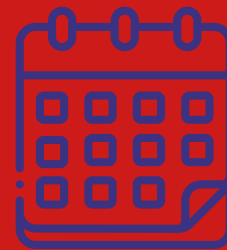
Year 5 have been finding out about the plants and animals of the rainforest and even created one themselves! In science, they have been exploring the parts of a flowering plant



YR 6 UPDATE

Year 6 are learning about the socio-economic differences between the UK and Brazil. They began by creating houses with different resources. Some groups had a range of resources to support them to be successful (scissors, glue, Sellotape and quality paper) and other groups only had scrap paper. The groups with fewer resources said it was unfair and thought they were disadvantaged. We used this activity to highlight the differences between economically advantaged areas compared to the areas that have fewer resources.

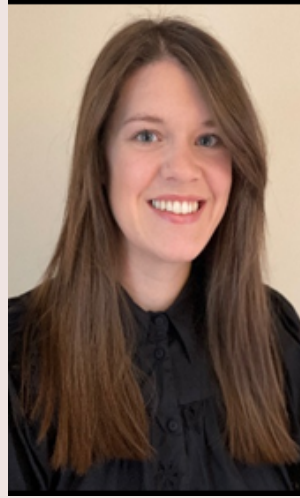
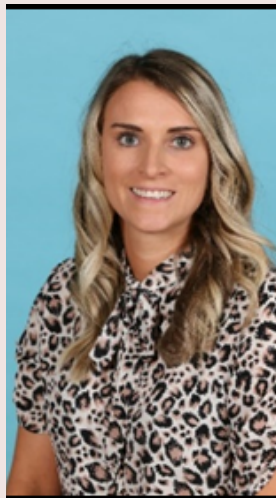
KEY DATES



- 26th January - Young Voices - Birmingham NEC Arena
- 2nd February - Rocksteady
- 9th February - Debate Club at Beeston Fields
- 9th February - Break up for half term
- 19th February - School re-opens
- 20th and 21st February - Bikeability Year 5/6 Group



SAFEGUARDING CONTACTS



DESIGNATED SAFEGUARDING LEADS

At Stanhope, safeguarding is our priority.

Amanda Richards is our Designated Safeguarding Lead.

Amy Messom, Katie Kier, Lucy McIntyre Sowter and Andrea O'Grady are our Deputy Designated Safeguarding Leads.

If you have any concerns please speak to a member of our team.

Mike Westwell, our Chair of Governors, is the Governor with safeguarding responsibility.



THANK YOU FOR READING



Connect with us:



Stanhopefha



Stanhopefha



Stanhopeprimary.co.uk

